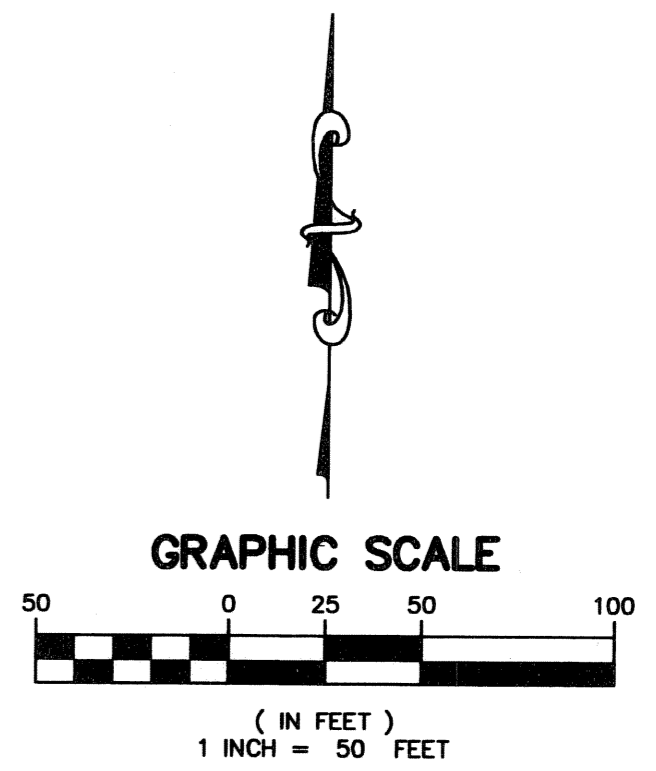
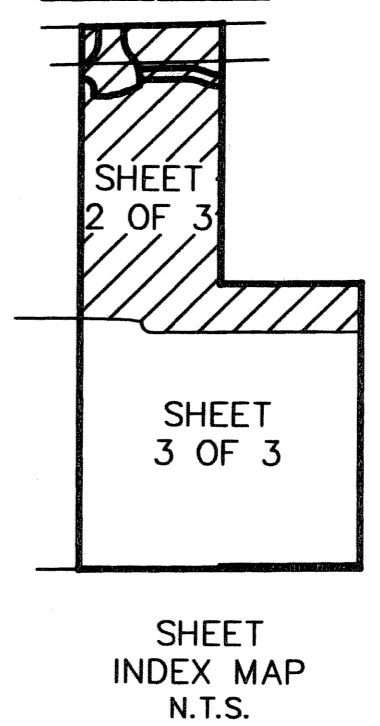
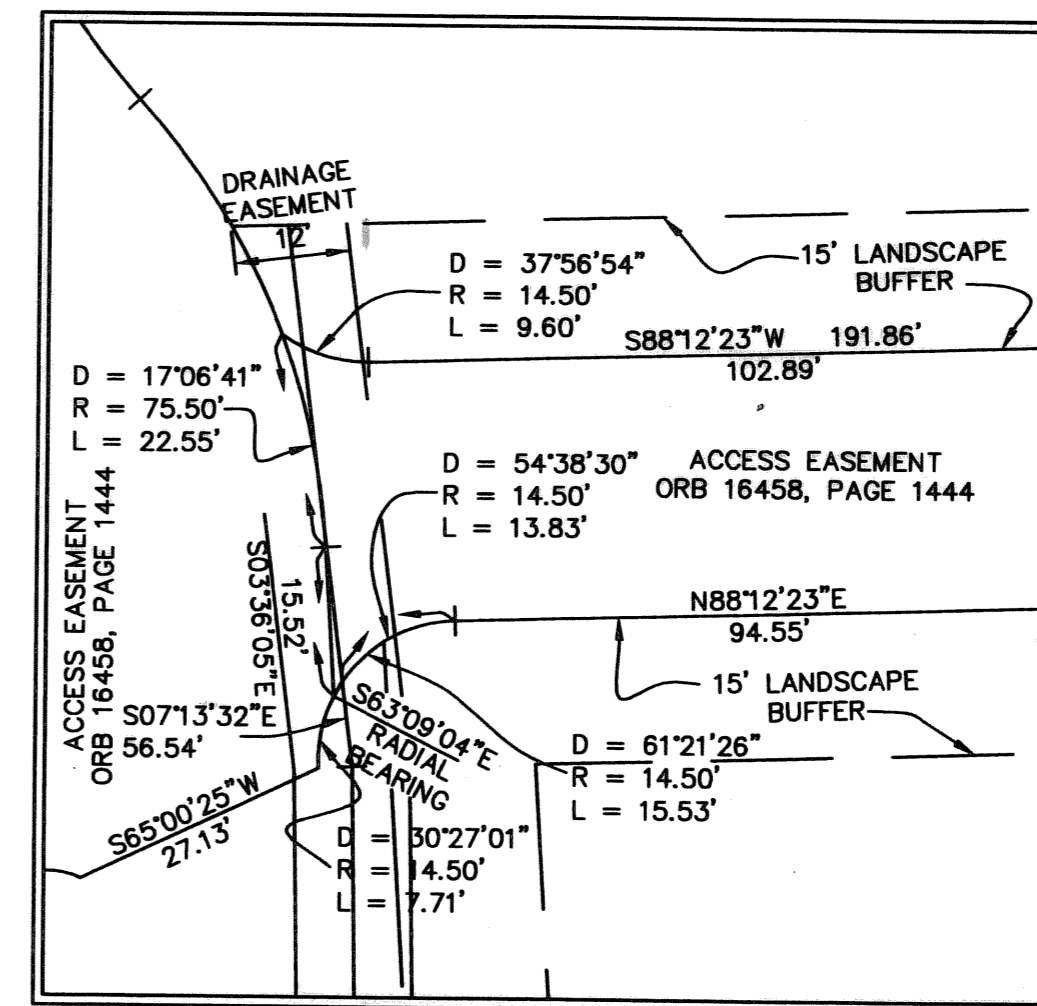
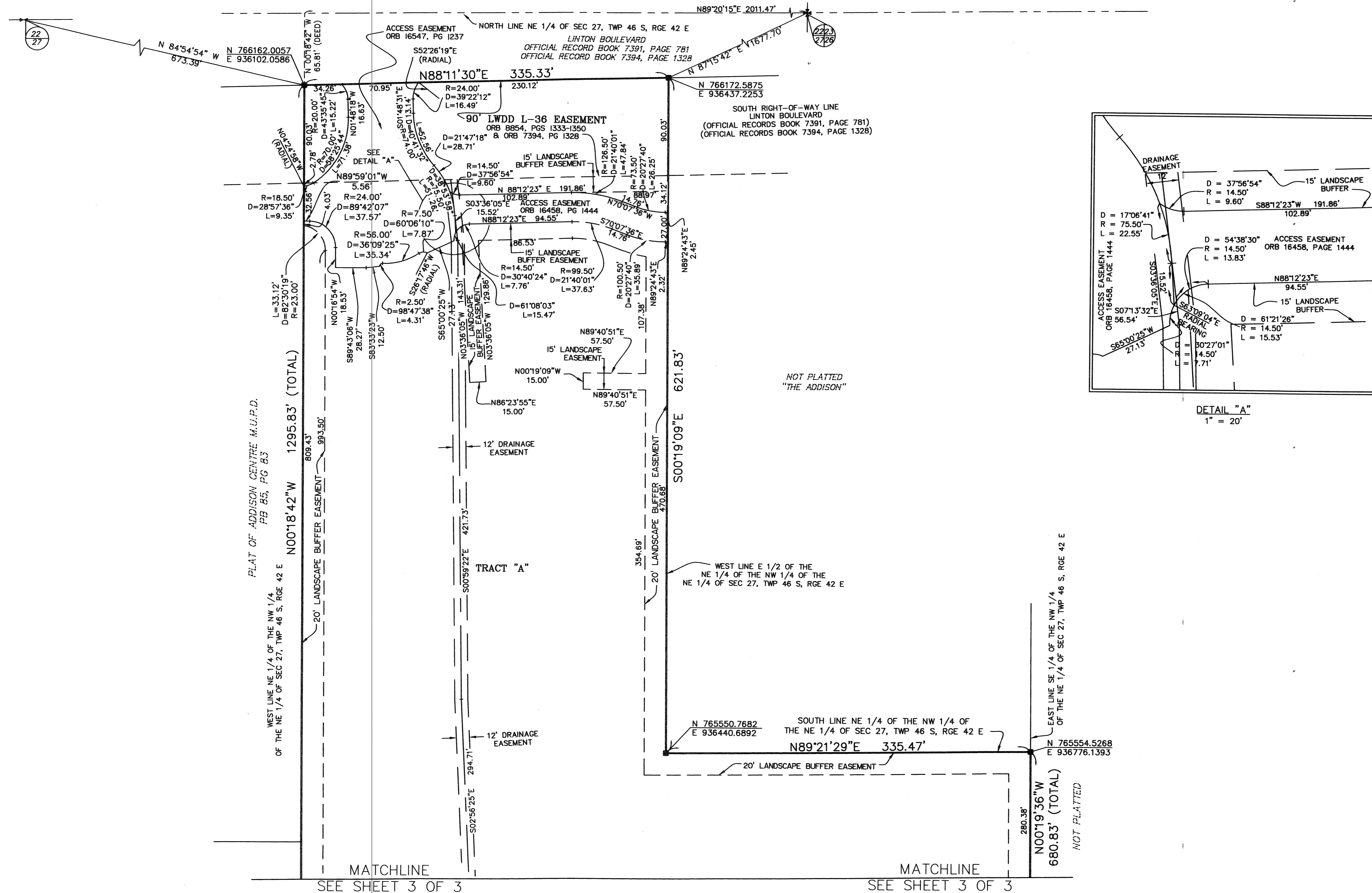


# DREXEL PARK

LYING IN NORTHWEST ONE-QUARTER (NW 1/4) OF THE  
NORTHEAST ONE-QUARTER (NE 1/4) OF  
SECTION 27, TOWNSHIP 46 SOUTH, RANGE 42 EAST,  
PALM BEACH COUNTY, FLORIDA.

JANUARY 2005

SHEET 2 OF 3



- ABBREVIATIONS:
1. D = DELTA (CENTRAL ANGLE)
  2. R = RADIUS
  3. L = ARC LENGTH
  4. □ = PERMANENT REFERENCE MONUMENT  
"MILLER LEGG & ASSOC. LB 6680"  
SET UNLESS OTHERWISE NOTED
  5. LB = LICENSED BUSINESS
  6. LAE = LIMITED ACCESS EASEMENT
  7. U.E. = UTILITY EASEMENT
  8. LB = LICENSED BUSINESS
  9. DE = DRAINAGE EASEMENT

SUBDIVISION DREXEL PARK  
PAGE 137  
BLOCK 104  
FLOOD HAZARD ZONE 215A  
ZONING PDD  
QUAD # 27  
SE  
TAZ 0774  
FUD NAME

V:\Users\j0001\03-00188 - Eagle Homes\Survey\03-00188 PLAT.dwg Tue 02/09/2005 10:58a By rhuuam